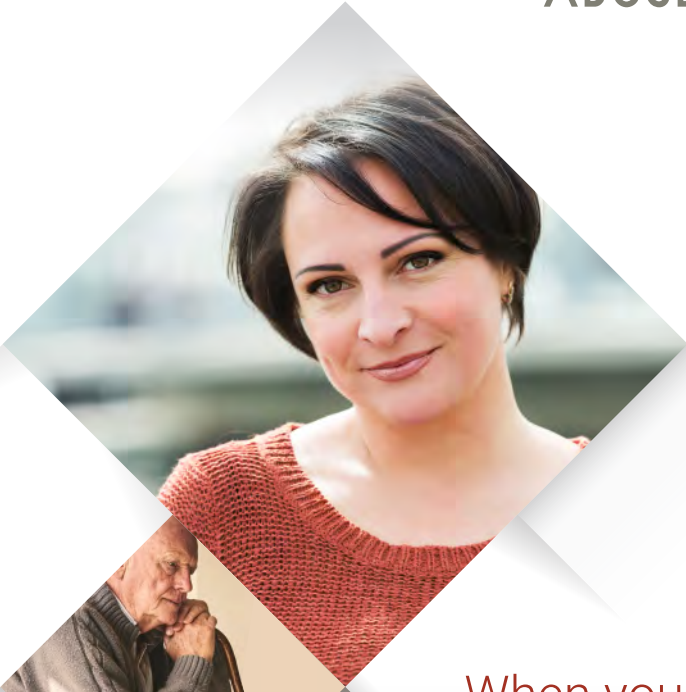


capsa

ABUSE ENDS HERE.



When you support **CAPSA**
You support **HOPE**

FY 21 ANNUAL REPORT



Dear Supporters,

At the time of publication, COVID-19 is a significant issue facing our community and CAPSA. I am proud of CAPSA's response in building processes, implementing technology and establishing protocols to ensure critical services remain available and clients are supported.

Instead of focusing on COVID-19, you will find that **this report focuses on the services we have provided, the expansion of critical needs including housing, the expansion of CAPSA's office and future plans.**

CAPSA is laser focused on building core services to meet the needs of survivors of domestic violence and sexual abuse. Due to this growth, CAPSA has out grown our outreach offices. **This year CAPSA will be building a 4,000+ sqft addition to our outreach offices, which will include additional group spaces, program offices and support centers.**

Read more about the building expansion on pages 8 –9.

For our clients, finding a safe home continues to be a major need, yet in our area, finding affordable housing is very difficult. CAPSA has addressed this barrier by building and securing dedicated homes for our clients. Last fiscal year, **CAPSA expanded the homes we own and operate from 9 to 15 and by the end of this fiscal year, we will have 21 units.** *Read more about CAPSA's housing program on pages 10 –13.*

Finally, we want to celebrate your support. **CAPSA cannot do this work without strong community support.** Although COVID-19 is stretching our services, we continue to meet the need because we are confident our community will increase their support to ensure anyone escaping abuse or healing from the trauma has access to CAPSA services.

Thank you,

A handwritten signature in blue ink that reads "Jill Anderson". The signature is fluid and cursive, with the first name "Jill" being more prominent.

Jill Anderson

CAPSA | Executive Director

FINANCIAL REPORT

PROGRAM AND OPERATION FUNDING

FY19 Financials are July 1, 2018 - June 30, 2019

Grants	\$1,733,313	71.3%	} COMMUNITY SUPPORT \$577,185
Fundraising / Events	\$197,674	8.1%	
Donations	\$324,517	13.3%	
Somebody's Attic	\$55,000	2.3%	
Misc Income	\$121,488	5.0%	
TOTAL REVENUE	\$2,486,992		

100% of your donation **SUPPORTS SURVIVORS**

You can feel good that 100% of your gift benefits individuals impacted by domestic violence, stalking, sexual abuse and rape.

88 percent of your donation supports core services, while only 12 percent is used for the cost of running the business and securing support.



\$0.88 of every dollar goes directly to programs

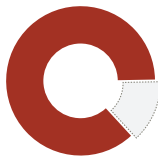
PROJECTED COMMUNITY SUPPORT NEEDED THIS YEAR



HOUSING PROGRAMS

Shelter and Transitional Housing

PROGRAM COST - GRANT FUNDS = **NEEDED DONATIONS**
\$841,923 - \$614,954 = **\$226,969**



SUPPORT PROGRAMS

Therapy and Advocacy Services

PROGRAM COST - GRANT FUNDS = **NEEDED DONATIONS**
\$1,442,796 - \$1,249,159 = **\$193,637**



PREVENTION EDUCATION

School and Community Education

PROGRAM COST - GRANT FUNDS = **NEEDED DONATIONS**
\$374,456 - \$235,400 = **\$139,056**

GIFT OF HOPE

An endowment fund is a permanent, self-sustaining source of funding. The principal is invested and restricted - so it will perpetually support CAPSA. This investment then generates dividends, which are used to support CAPSA programs.

When you donate to an endowment, you provide stability and ensure CAPSA's future financial health. Endowments allow organizations to weather storms either from a crisis like COVID-19 or unanticipated losses such as a loss of a grant. This stability allows organizations to strategically grow to meet the needs of our community.

TARGETED ENDOWMENTS GOALS



PROGRAM FUNDS

Shore up shelter, therapy, casework and other programs.

GOAL
\$5,000,000.00

Learn more on the following page.
Page 3



BUILDING FUNDS

Ensure CAPSA's shelter and outreach office remain a place of refuge.

GOAL
\$3,000,000.00

Learn more in the building expansion section.
Page 8



HOUSING PROGRAM

Support CAPSA's housing program - direct housing aid and home maintenance.

GOAL
\$5,000,000.00

Learn more in the housing section.
Page 13

CAPSA ENDOWMENT

ENDOWMENT SUPPORTING PROGRAM FUNDS

CAPSA's programs are well developed and staffed by experts who provide advocacy and support to our clients. These programs are funded largely by competitive grants, which means CAPSA is forced to reapply every one to two years. Grants often change emphasis, which require program to change every few years. Lastly, because of the competitive nature of a grant, it may not renew which forces CAPSA to end a core program or find outside funding.

An endowment allows CAPSA to be more strategic when developing programs and more resilient if grant funding is lost.

The five million dollar program endowment goal is designed to be flexible to meet the programming needs as they arrive; the approximate goals per program are:

Clinical Therapy - \$1,500,000
Education & Prevention - \$1,000,000

Casework \$1,500,000
Shelter - \$1,000,000

ENDOWMENT EXAMPLE

If you donate \$100,000 to CAPSA's endowment, your donation will be invested. With a 6% return, your \$100,000 gift will generate \$6,000 in dividends the first year. CAPSA will use \$4,000 for CAPSA programs and reinvest the \$2,000 to increase future impact.



Each year your donation will continue to grow while generating program funding. At 10 years, your gift will have generated a total of \$43,798 in program funding. At 20 years, it will have blessed CAPSA with \$102,272 in program funding – this is more than your original gift.

CAPSA'S PROGRAMS



CAPSA'S SUPPORT

CAPSA supports individuals who have experienced domestic violence, rape and/or sexual assault. Our wrap-around services help individuals and families escape abuse and heal.

 **1551**
CLIENTS SERVED

 **4344**
CRISIS PHONE CALLS



EMERGENCY SHELTER

CAPSA provides a safe place for individuals and/or families escaping domestic violence, rape and/or sexual assault. Our shelter provides a refuge to begin healing. We shelter men and/or women and their accompanied children.

 **300**
SHELTER CLIENTS

 **9900**
CLIENT NIGHTS

 **ZERO**
TURNED AWAY



CASEWORK

CAPSA caseworkers are experts at assisting victims of domestic violence, sexual abuse, rape and stalking to become safe, secure resources, navigate legal proceedings, and find housing

 **863**
CASEWORK CLIENTS

 **86**
PROTECTIVE ORDERS



CAPSA SUPPORT GROUPS

CAPSA offers support, educational and therapy groups for our clients. Groups create a safe place to learn, process and heal while developing a peer-based support network.

Many of these groups have complementary children appropriate curriculum taught by a child advocate. This allows the clients and their children to learn similar concepts and have a shared vocabulary.

SUPPORT OUR COMMUNITY

HOUSING PROGRAM

CAPSA offers a transitional housing program and housing assistance funding to provide a safe place for survivors to live while beginning a new life without abuse.

 **400**
HOUSING CLIENTS

 **21**
CAPSA HOMES



CLINICAL THERAPY

CAPSA offers free and confidential clinical therapy for adults and children who experience anxiety, fear, depression or other trauma from domestic violence, sexual assault and/or rape.

 **400**
THERAPY CLIENTS

 **2333**
THERAPY HOURS



EDUCATION & PREVENTION

CAPSA presents curriculum promoting healthy relationships, increasing protective factors and bringing awareness to CAPSA's services. We present in all middle and high schools in Cache and Rich Counties and in business and to community groups.

 **650**
PRESENTATIONS

 **30,533**
STUDENT/ PARTICIPANTS



CAPSA ONGOING SUPPORT AND THERAPY GROUPS

DOMESTIC VIOLENCE
SUPPORT GROUP

SEXUAL ASSAULT
THERAPY GROUP

DV SUPPORT GROUP
(RICH COUNTY)

SPANISH SUPPORT
GROUP

HOUSING
WORKGROUP

IN TOUCH WITH
TEENS GROUP

BRAINWISE
FOR PARENTS

BRAINWISE
FOR KIDS

JAIL SUPPORT
GROUPS



Last year, CAPSA held ____ sessions with ____ participates.

WHY YOUR SUPPORT MATTERS

CLIENT STORY

Sofía always tried so hard for her and her daughter; however, her ex did not want to let her go... He alienated her from her family and friends, threatened her landlord which forced her out of her apartment, showed up to her job multiple times making scenes, resulting in her losing her job. Sofia and her daughter were reduced to living in a storage unit, because it was the only place she could find to get away from him.

Sofía tried so hard for her and her daughter, however, she needed help. **Sofía came to CAPSA where she found a safe place and resources to end the abuse.**

ZERO TURN-AWAY

ENSURING A SAFE REFUGE

Domestic violence (DV) shelters across the country are forced to turn away individuals seeking shelter because of limited space and funding. Imagine the despair of requesting help and being told there is no room.

In 2016, CAPSA became the first zero turn-away shelter in Utah for local individuals displaced because of DV or sexual abuse. CAPSA works with hotels to provide rooms for a discounted rate – average \$60 per night.

To support one safe night each year, it only requires a \$5 donation per month.

The majority of the funding of the zero turn-away program is from partnering businesses who promote this program and encourage payroll deduction. CAPSA's current partners are:



MALOUF
FOUNDATION

The demand for shelter continues to increase and we are looking for additional businesses partners to support the Zero Turn-away program through payroll deduction.





CAPSA IS LEADING SYSTEM-BASED CHANGE

The Blueprint for Safety project partners CAPSA with the criminal justice system including law enforcement, prosecution and system-based advocates to improve responses to domestic violence cases. CAPSA is the lead agency facilitating this work.

Over the last year, Blueprint for Safety has lead influential work groups to improve the criminal justice system's response to domestic violence. Our community partners have worked together to assess and make appropriate policy changes.

They begin by assessing our law enforcement, improving accessibility to intervention and accountability for offenders, and improve CAPSA's response to better support survivors and their families.

This is being accomplished by objectively evaluating the system as a whole as well as receiving direct input from survivors.



ENSURING SURVIVORS VOICES ARE HEARD



A critical part of Blueprint is the survivor's experience. CAPSA holds focus groups with past victims of abuse and has established a survivor advisory group to ensure their experiences are considered as policies are being changed. The goal is to allow the survivors voice to be heard, hold offenders accountable, and keep victims and communities safe in the future.

EXPANDING OUR OUTREACH OFFICE



EXPANDING OUTREACH SERVICES

Last year CAPSA announced the need to expand our outreach service building (main office). CAPSA continues to grow our programs to meet the need of our community; however, we have outgrown our current office space requiring our staff to shuffle offices, share workspaces and work remotely. We would also like to expand services such as increased support groups, community trainings and increase our intern program.



We are excited to announce The Charis Legacy Foundation has backed this project. We will complete the building this fiscal year.

THE BUILDING WILL FEATURE

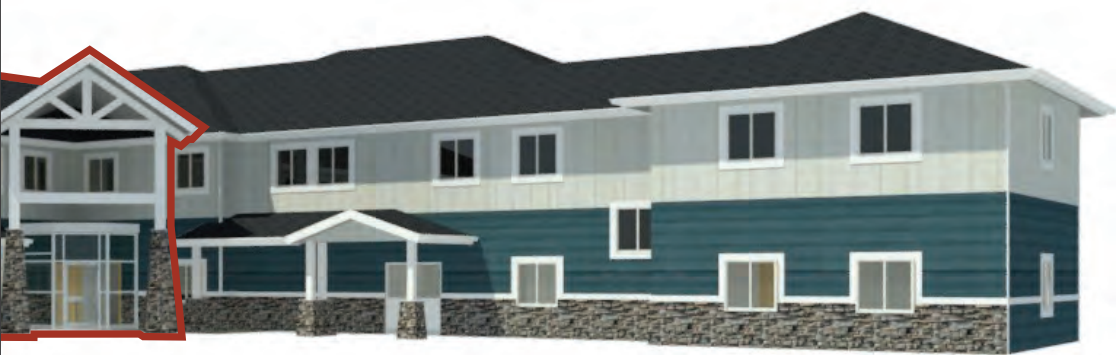
This 4,400 sq. ft. addition will create a single entry for improved security and add clinical therapy offices, community education space, dedicated group rooms, open space for the Prevention Education Department and an administrative space.

BUILDING ENDOWMENT - FUND THE FUTURE

For our clients, CAPSA's outreach office and shelter are refuges from the storm of abuse. We are seeking support to fund an endowment for the maintenance and operational cost for our campus.

There is significant cost to operate and maintain a building of this size. This is even more significant due to the nature of our business. Our domestic violence shelter houses up to 32 individuals, additional safety systems (security, fire, gates and more) and accessibility features including an elevator.

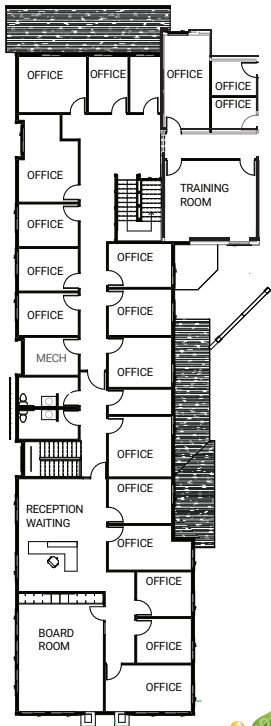
DOUBLE THE SPACE | DOUBLE THE IMPACT



MAIN FLOOR



SECOND FLOOR



Our annual budget for:

MAINTENANCE	\$60,000
UTILITIES	\$30,000
LIABILITY INSURANCE	\$25,000

TOTAL \$115,000

For an endowment to cover these expenses, based on a 4 percent distribution rate, the **endowment balance needs to be \$3 million.**
Help plant the seed today to fund our client's refuge in the future by contacting James Boyd at 435-753-2500.



SOLVING CLIENTS' HOUSING NEEDS



For most of our clients, finding low cost/affordable housing continues to be the most significant barrier to start a life free from abuse.

CAPSA's Transitional Housing Program is a two-year program which includes housing subsidies coupled with advocacy and educational programming. It has been successful at helping families start new lives free from abuse. However, due to the shortage of affordable housing and to meet the needs of clients who otherwise not qualify for standard housing, CAPSA built Independence Place.



INDEPENDENCE PLACE

Many domestic violence survivors have their credit damaged by their abuser or other factors such as length of employment, which makes qualifying for housing difficult. This is why CAPSA built Independence Place, which was completed in 2015. This neighborhood serves as a safety net allowing CAPSA to place more families in housing.

CAPSA is leading the state in domestic violence transitional housing programs. Independence Place is the first and only neighborhood in Utah owned and operated by a DV nonprofit – that is until we complete Independence Way.

**INDEPENDENCE PLACE
9 HOMES**

\$127,878

HOUSING ASSISTANCE

Last year, CAPSA provided \$127,878 in housing funds for clients, which include rental assistance, security deposits, moving expenses and more. These are critical funds to support clients and benefit our community, as they pay local landlords and businesses.

SUPPORTING CAPSA HOUSING



Housing is a key part of helping families escape abuse and heal. **When you become a home sponsor, you become part of the neighborhood** - we put a sign on your home.

HOME SPONSORSHIP INCLUDES

Home sponsorship is \$6,000 per year - this represents the average cost for CAPSA to provide housing assistance. Sponsorship includes:

- Signage on a CAPSA Home
- Public Recognition - sponsorship at all CAPSA events
- Team building opportunities at your home
- Knowledge you are providing a safe home for a family

SPONSORSHIP AVAILABLE

With the addition of Independence Way, there are still a number of homes available to sponsor.

Please contact James Boyd at 435-753-2500 to learn more about sponsorship.

More info at www.capsa.org/home-sponsor



HOME SPONSORS (AT TIME OF PRINTING)



LORNA WANLASS



MALOUF
FOUNDATION



MIKE & RONDA CALLISTER
PAT TERLETZKY & ERIC GESE

NEW FY21 - INDEPENDENCE WAY

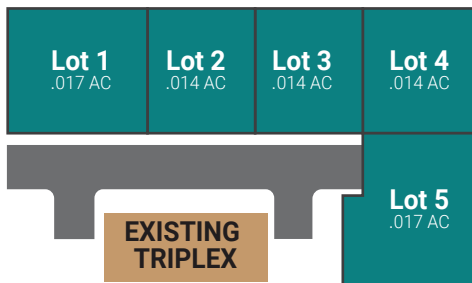


The need for additional affordable housing continues to increase. CAPSA had the opportunity to purchase an unfinished development, which includes an existing triplex and five building lots.

With the backing of the supporters listed below, CAPSA purchased this development and began construction of the five homes in the spring of 2020. The neighborhood will be completed in spring of 2021.

This neighborhood will be called INDEPENDENCE WAY and will be CAPSA's second neighborhood. It will be similar to Independence Place, allowing clients to secure housing for up to two years.

With your support, CAPSA continues to meet the housing needs for our clients and leads Utah in our DV transitional housing programs.



8 ADDITIONAL HOMES

INDEPENDENCE WAY SUPPORTERS



DELL LOY
**HANSEN
FAMILY**
FOUNDATION



MEASOM FAMILY
foundation



SORENSEN LEGACY FOUNDATION



INDEPENDENCE WAY WILL BE PART OF THE HOME SPONSORSHIP PROGRAM – LEARN MORE ON PAGE 11.

NEW FY20 - HANSEN FOURPLEX



The Dell Loy Hansen Family Foundation purchased a fourplex in Logan for CAPSA's exclusive use. The renovation was paid for by the Real Salt Lake Foundation and became available in April 2020.

These homes initially provided short-term shelter during the initial COVID-19 crisis, but now serve as part of CAPSA's transitional housing program.

4 ADDITIONAL HOMES



MORE HOMES = WE NEED MORE SUPPORT

Last year, CAPSA provided \$127,878 in housing related funds for rental assistance, security deposits, moving expenses and more. The funds allow individuals and families to find safe homes. These are primarily grant funded and are not guaranteed. If we lose these funds, **without an endowment, we will have to stop providing direct housing assistance.**

MAINTAINING CAPSA'S HOUSES

By the end of this fiscal year, CAPSA will also manage and maintain 21 units. Rental properties need normal maintenance and there are additional expenses prior to new tenants moving into the home - since CAPSA's housing program is short-term, this expense is higher than similar rental properties.

In FY 21, we are budgeting \$75,000 in maintenance for housing. An endowment will help cover these funds and ensure these homes are safe and in good condition for our clients.

THE HOUSING ENDOWMENT NEED

For an endowment to cover these expenses and ensure the same level of housing, the endowment needs to generate approximately \$200,000 in housing funds. Based on a 4 percent distribution rate, the **endowment balance needs to be \$5 million.**

Help plant the seed today to fund safe homes in the future by contacting James Boyd at 435-753-2500.





INCREASING AWARENESS AT LOCAL BUSINESSES

CAPSA's awareness educators present curriculum promoting healthy relationships, reducing risk factors, increasing protective factors and bringing awareness to CAPSA's services. For more than 20 years, CAPSA has been presenting in middle schools and high schools in Cache and Rich Counties.

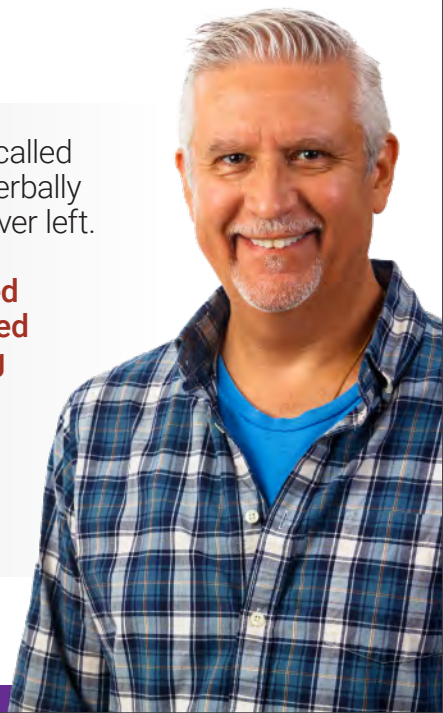
Last year, CAPSA hired an educator to focus primarily on developing and presenting to businesses and other social service agencies. Trainings helps supervisors recognize signs of domestic violence and know what resources are available through CAPSA.

If your business would like CAPSA to present, please request training at education@capsa.org.

Marc heard a CAPSA radio advertisement and called CAPSA to see if we could help. His wife was verbally abusive and threatened to harm herself if he ever left.

"Until I heard CAPSA's [radio] ad, I felt trapped and afraid. When I called CAPSA, they listened and believed. CAPSA's support made leaving a possibility, but it was them believing me that made it a reality."

CAPSA helped Marc find housing and supported him with clinical therapy.



INCREASED SUPPORT FOR CLIENTS

THE KNOW CAMPAIGN

CAPSA has been awarded two grants from Utah Office for Victims of Crime (UOVC) which provides funding for awareness for sexual assault support service and for awareness for domestic violence support services.

CAPSA developed the KNOW Campaign, which is designed to inform and empower survivors of sexual abuse, rape and domestic violence, by bringing awareness to the issues and breadth of services CAPSA offers. Funding continues during FY21.

These advertisements were placed on social media, print, posters, radio, bus wraps and more.

The central theme of this campaign is:

**WHEN YOU KNOW CAPSA,
YOU KNOW PEACE
HELP
HOPE
SAFETY
DIGNITY
WORTH
HEALING
SUPPORT
BELIEF**

More info at www.capsa.org/know



CAPSA OFFERING CONTINUING EDUCATION



CAPSA is now offering advocacy training online for professionals seeking CEUs. These trainings are presented and/or approved by CAPSA program and clinical staff. CAPSA is a nonprofit domestic violence, sexual abuse and rape recovery center serving northern Utah. CAPSA's staff are experts on providing trauma-informed support services.

This training has been accredited by the N.A.S.W. Utah Chapter.

WAYS TO SUPPORT CAPSA

We cannot do this work without you and support from people like you. Please consider supporting CAPSA in the following ways:



DONATE CASH

Your donation will help CAPSA provide lifesaving support services. You can donate online at www.capsa.org/donate

Or by mail at:

CAPSA
Attn: Donations
P.O. Box 3617
Logan, UT 84323-3617

THANK YOU FROM EVERYONE CAPSA SERVES



**SOMEBODY'S
ATTIC**
— THRIFT BOUTIQUE —

SUPPORT SOMEBODY'S ATTIC

Somebody's Attic is a local thrift store, with locations in downtown Logan and Smithfield. They raise funds for CAPSA. Last year, Somebody's Attic donated over \$60,000 to CAPSA.

When you donate to and shop at Somebody's Attic, you are supporting CAPSA and those we serve.



PROMOTE OUR MESSAGE

Please follow us on Facebook and Instagram and like, comment on and share our posts. There are people in your network who need CAPSA's support. By sharing our content, you are showing them your support and giving them a valuable resource.

@CAPSAservices



MALOUF FOUNDATION

CAPSA CANNOT DO THIS WORK WITHOUT MALOUF'S SUPPORT

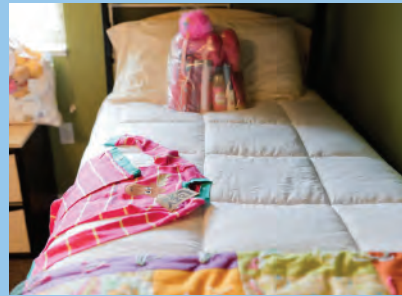
For more than 10 years, the Malouf Foundation has provided the bedding for CAPSA's shelter. This saves thousands of dollars and ensures that each year more than 300 women, men and children, have a safe and comfortable refuge. Malouf also donate hundreds of beds, pillows and bedding to clients transitioning into CAPSA's housing program.

Malouf helps raise direct funds for CAPSA programs. The annual Malouf Art for CAPSA event is organized and hosted by Malouf and supports CAPSA's clinical therapy program.

Malouf Foundation has sponsored a home since 2018.

Malouf employees are encouraged to donate directly to the CAPSA shelter zero turn-away program through payroll deduction.

THANK YOU FOR YOUR SUPPORT OF CAPSA AND THOSE WE SERVE.





FY 21 ANNUAL REPORT

Report on FY 21
(July 2019 - June 2020)
and future plans to serve.

WWW.CAPSA.ORG
435-753-2500



The Malouf Foundation covered the printing cost for this publication. Learn more about the Malouf Foundation's support of CAPSA on the back inside cover.